

FlatPanel Audio

LS208

High output dual 8" compact bass reflex subwoofer

Designed to complement our DML500 and DML500A loudspeakers in spaces where a full-sized subwoofer won't fit.

- High output subwoofer system, bass reflex, semi horn-loaded port design
- The same width as the DML500 loudspeaker
- 6th order bandpass with asymmetrical acoustic chambers

Details that make it professional

- Multi-ply birch construction
- Rubber feet, hard rigging points, and a wall mount solution provide installation flexibility

Powerful performance, compact form—the LS208 stands out

Remarkably compact, this high output subwoofer is a fit for installations that are constrained by space or require a unique mounting solution.

The LS208 extends low-frequency performance beyond what our loudspeakers offer, handling everything below 100Hz with two robust 8-inch drivers featuring heavy-duty 2-inch voice coils. Together, they deliver 700W continuous power and an impressive 2800W peak.

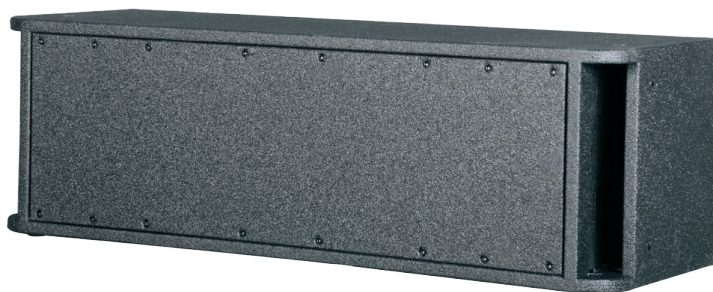
Combining the LS208 with the DML500 or DML500A loudspeakers will provide a full-range package that can also handle everything from simple background music to high energy environments such as bars and restaurants.

The LS208 is ideal for when you require low end support but don't have the space, budget, or need to reach the lower frequencies handled by our LS212 and LS118 subwoofers.

Applications:

Liturgical churches
High energy distributed audio in bars, restaurants and retail stores
Schools

Portable applications and gigging musicians
Conference Rooms
Gyms and workout spaces
Dance studios
Immersive venues



LS208 system

Frequency range (-10dB) 45Hz –300Hz

Frequency response (-6dB) 48Hz –275Hz

System sensitivity 95 dB

Rated maximum SPL 129 dB (peak)

System nominal impedance 4 ohms

Input Dual Speakon NL4

Power handling

Continuous /Program /Peak 700W/1400W/2800W

Driver

Low frequency transducer Two 8-inch

Voice coil diameter 51mm

Voice coil winding wire Copper-clad aluminum

Magnetic motor Ferrite

Design

Enclosure Asymmetrical dual-chamber band pass, 6th order

Hardware attachment

Surface mount attachment points Two for wall mounting, including wall brackets

Rigging points 12 internal M8

Physical

Outer dimensions (H x W x D) 31.5 in x 9.8 in x 10.6 in
800 mm x 250 mm x 270 mm

Weight 41.8 lbs / 19 kg

Shipping dimensions (H x W x D) 34 in x 12.2 in x 13 in
865 mm x 310 mm x 330 mm

Shipping weight 45.8 lbs /20.8 kg



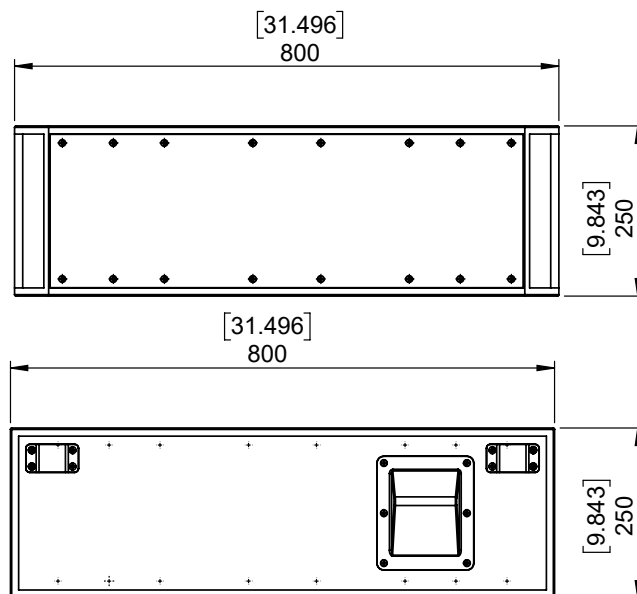
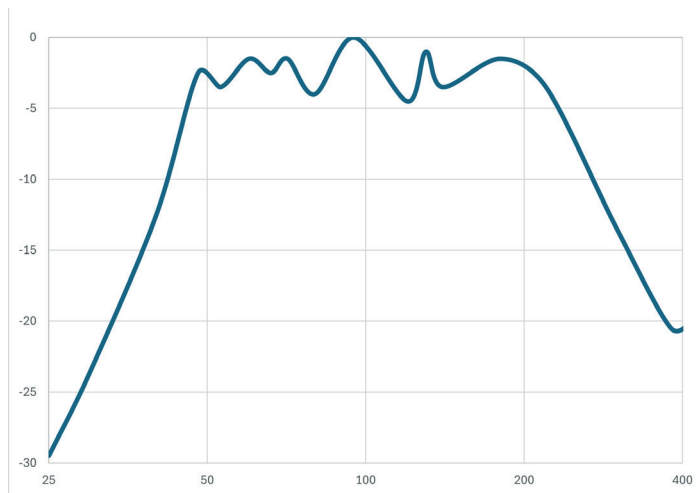
FlatPanel Audio continually engages in research related to product improvement.. Specifications are subject to change without notification.

FlatPanel Audio LS208

High output dual 8" compact bass reflex subwoofer

Frequency response

Measured using ground plane technique, microphone placed at 2 meters.



Suggested filtering/crossover

The following are the initial acoustic filters as implemented for the LS208 ground plane measurement:

Recommended crossover

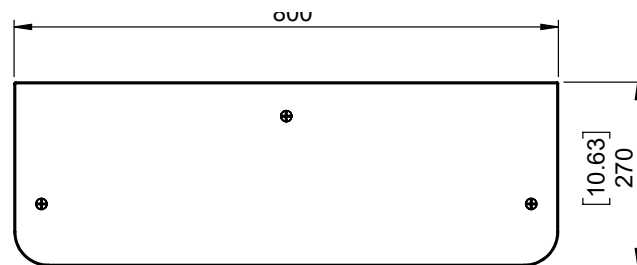
High Pass: Butterworth 48 dB/Octave at 38Hz

Low Pass: Butterworth 24 dB/Octave at 95Hz (user defined)

Recommended EQ

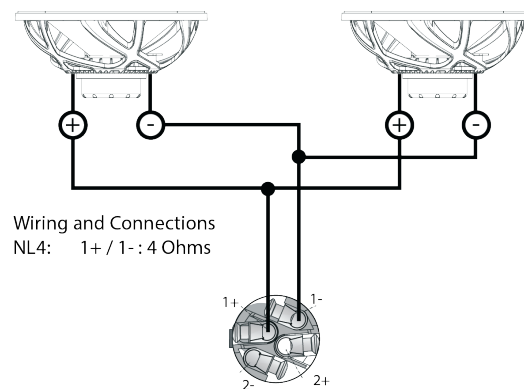
40Hz / Q of 5 / Gain of +7dB

80Hz / Q of 9 / Gain of +3dB



Protection settings

RMS limiter	Threshold	53 Volts
	Attack	14 Seconds
	Release	20 Seconds
Peak limiter	Threshold	75 Volts
	Attack	356 Milliseconds



Accessories

FlatPanel Audio manufactures a variety of accessories and installation solutions for the LS208, allowing for seamless system integration.



FlatPanel Audio, LLC
350 West Main Street, Unit C
Los Gatos, CA 95030 USA
408.457.4371
www.FlatPanelAudio.com